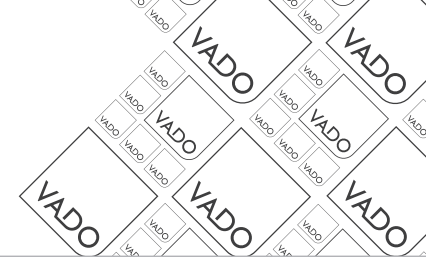




where inspiration flows

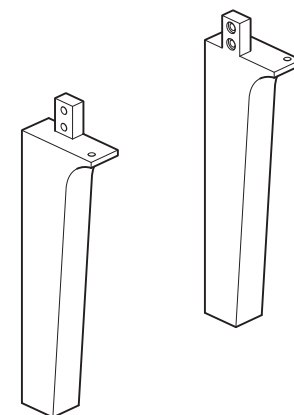
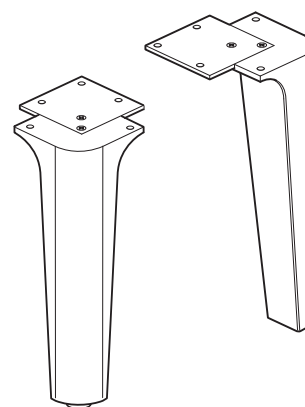
CAMEO

Installation Guide
Vanity Unit legs



This instruction booklet covers these models:
CAM-LEGS-FRONT. CAM-LEGS-REAR.
(All finish options)

CAM-LEGS-FRONT
CAM-LEGS-REAR



Vado
Wedmore Road, Cheddar, Somerset, England BS27 3EB
tel 01934 744466. fax 01934 744345
aftersales@vado.com
www.vado.com



Important - Please Read

VADO reserves the right to make technical improvements and enhance the appearance of the products included in this instruction manual.

Please read these instructions carefully before starting the installation and keep for future reference.

Remove all packaging and check the product for missing parts or damage before starting installation.

Any unadvised alterations made to this product will invalidate the guarantee. Please take great care when installing this product to avoid damage to its surface.

Please note that some units are heavy. Take care when lifting, and follow health and safety guidelines. It is recommended that 2 people carry out the installation of larger basin/vanity units over 30Kgs gross weight.

We recommend installing the vanity unit to a solid wall, if fitting to a stud wall ensure that the fixings are anchored into the studs and not just the plasterboard.

The vanity legs need to be installed prior to the vanity being secured to the wall.

Installing only the front legs is strictly for aesthetic purposes and full vanity installation must be followed.

Cleaning Instructions

The coating on this product is finished to the highest standard. Due care needs to be taken to ensure the appearance is retained.

We recommend cleaning all products with a soft damp cloth ONLY and advise strongly against the use of all aggressive/corrosive cleaning products i.e. powders and liquids.



If these instructions are not followed, this may invalidate your guarantee in the event of a problem occurring.

Note: Bathroom furniture will deteriorate through extended exposure to elevated levels of condensation. To mitigate this, it is imperative that bathrooms are equipped with an appropriate ventilation system, such as an extractor fan.

Guarantee

These VADO vanity unit legs come with a 2 year guarantee as standard. Within this guarantee period, VADO may provide replacement parts. This standard guarantee can be extended by registering your product on our website at: <https://www.vado.com/support/guarantee>. Once registered, these vanity unit legs will have a 6 year guarantee.

Guarantee Conditions

Our products are guaranteed against manufacturing defects from the date of purchase until the expiry of the relevant guarantee period shown above.

The guarantee is only valid if:

- The product has been installed, used and maintained in accordance with VADO's instructions and subjected to normal use only.
- The defect is not due to accident, misuse, neglect, or incorrect/inappropriate repair (other than by VADO or VADO authorised agents) or damage caused by foreign objects or substances.
- The extended guarantee is only available if you have completed the guarantee registration process. This can be done via the VADO website or via telephone to our Aftersales team. Registration must be completed within 6 months from the date of purchase. Under the extended guarantee period VADO will, at its option, offer to supply any replacement product (or component part) assessed to be defective **[SEE NOTE 1]**.
- The guarantee (whether standard or extended) is non-transferable to any subsequent owner.
- Mould, Mildew build up, the effects of limescale and corrosion are not covered under this guarantee.
- This guarantee does not cover damage and/or malfunction caused by inappropriate cleaning (please refer to our recommended care and maintenance guidelines).
- Damage to VADO furniture caused by standing water or inadequate room ventilation is not covered under this guarantee.

All claims under the guarantee should be notified in the first instance to our Aftersales department, contact details below, this must be done no later than the last day of the relevant guarantee period.

All claims must be accompanied by proof of purchase (sales receipt or delivery note) from an official VADO dealer.

The guarantee does not extend to any consequential loss or damage.

After repair or replacement, the relevant guarantee period will be calculated from the original date of purchase.

VADO operates a policy of continuous product development and therefore reserves the right to change the product, packaging and documentation specifications without notice. In situations where like-for-like replacements are not possible, VADO will endeavour to provide the closest alternative. E&OE.

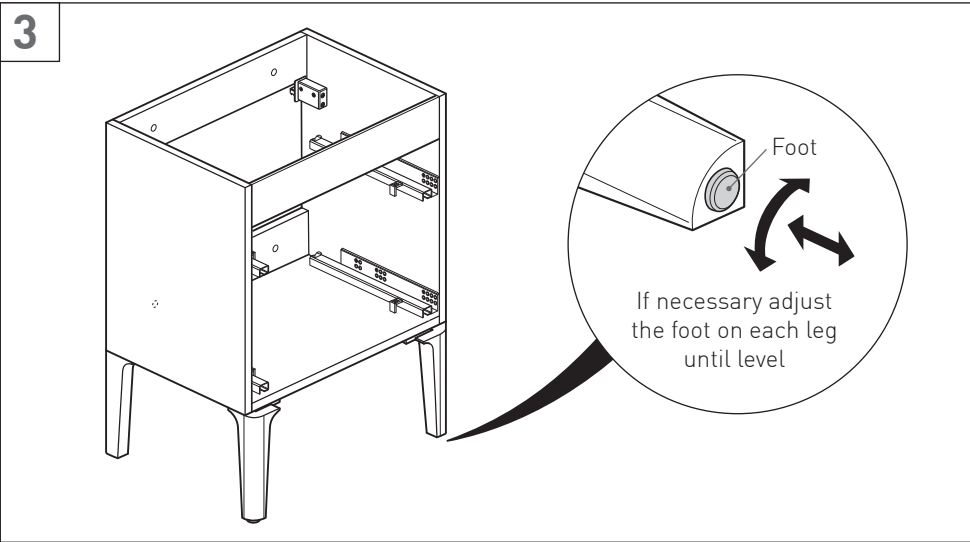
NOTES:

[1] VADO reserves the right to charge in advance for a product (or replacement part) pending collection and investigation (at VADO expense) to confirm a defect is due to a manufacturing issue. If a defect is found the charge will be refunded or cancelled. This guarantee is in addition to and does not affect your statutory rights as a consumer.

Tel: 01934 745163

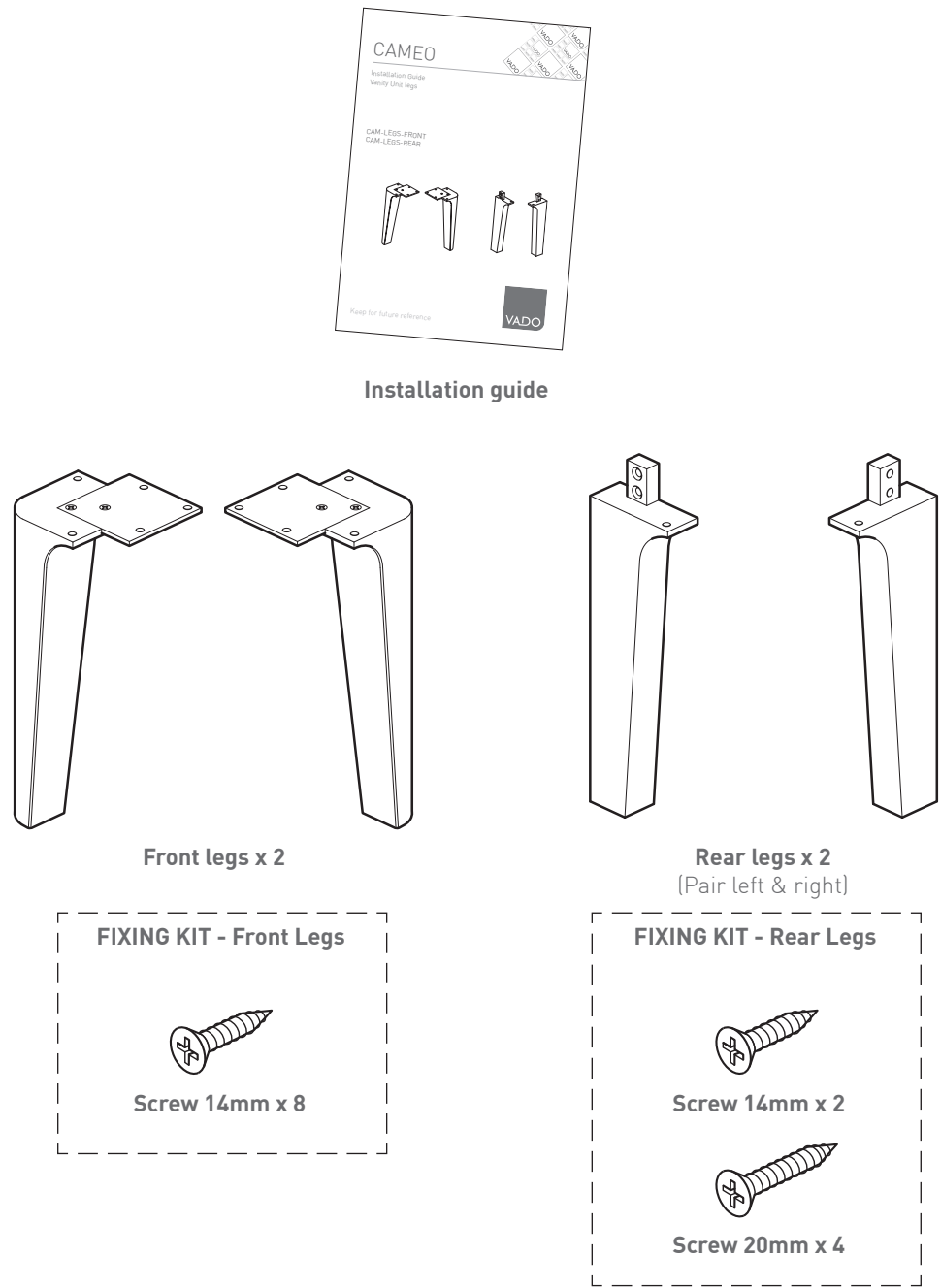
Email: aftersales@vado.com

Installation- rear legs

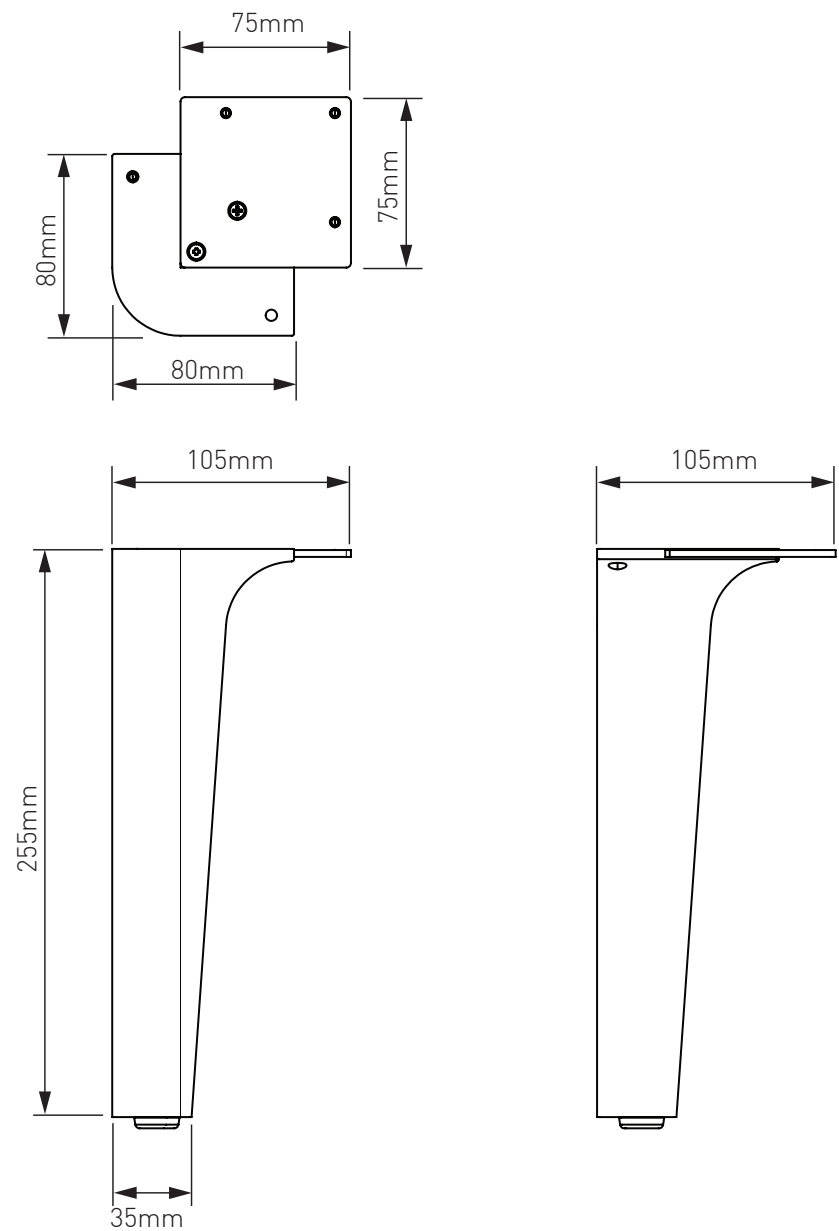


Place the unit into the desired location. If required, the unit can be leveled using the adjustable feet on the bottom of each of the four legs.
To finish the installation please refer to the 'additional fixing method' section (see page 9) within the Vanity unit instructions.

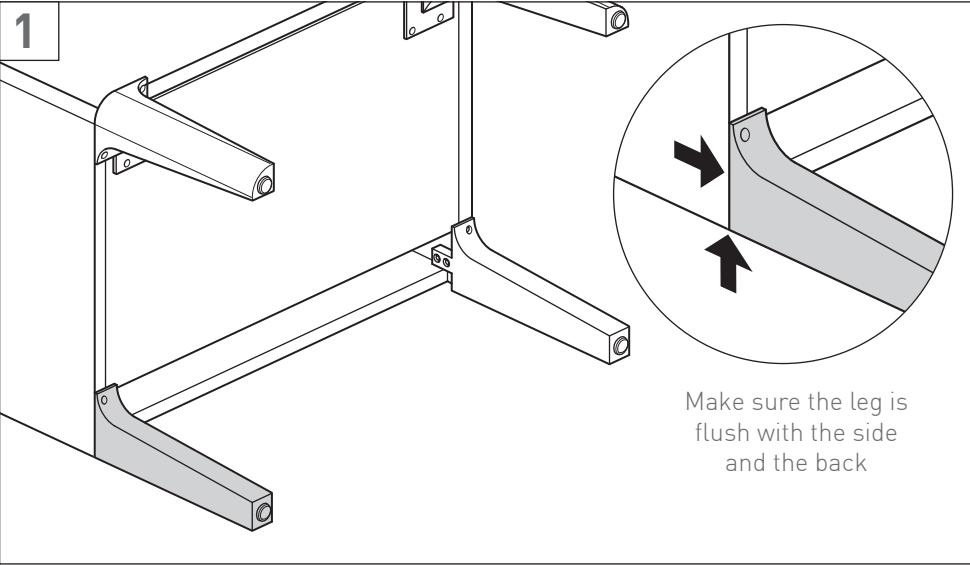
Contents of Packaging



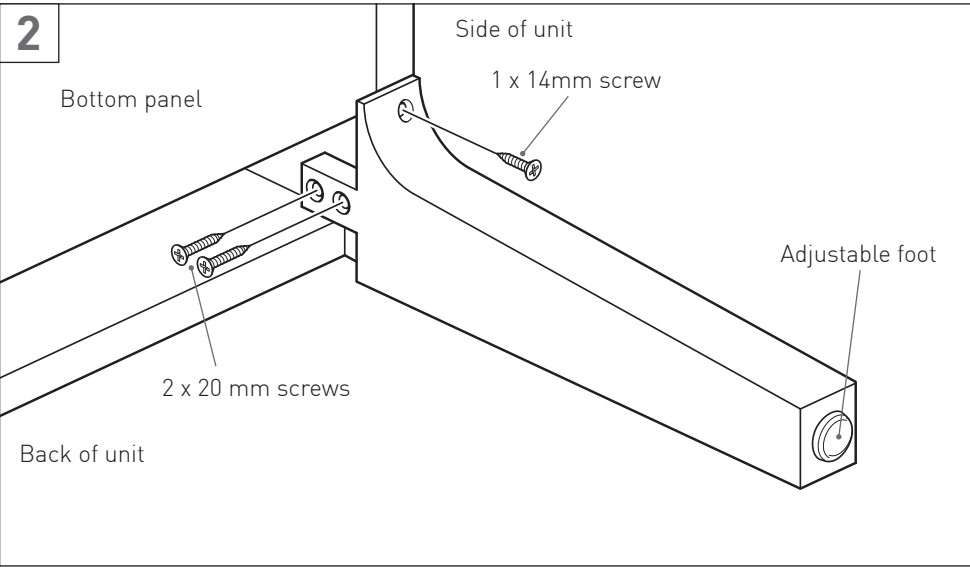
Dimensions - front legs



Installation - rear legs

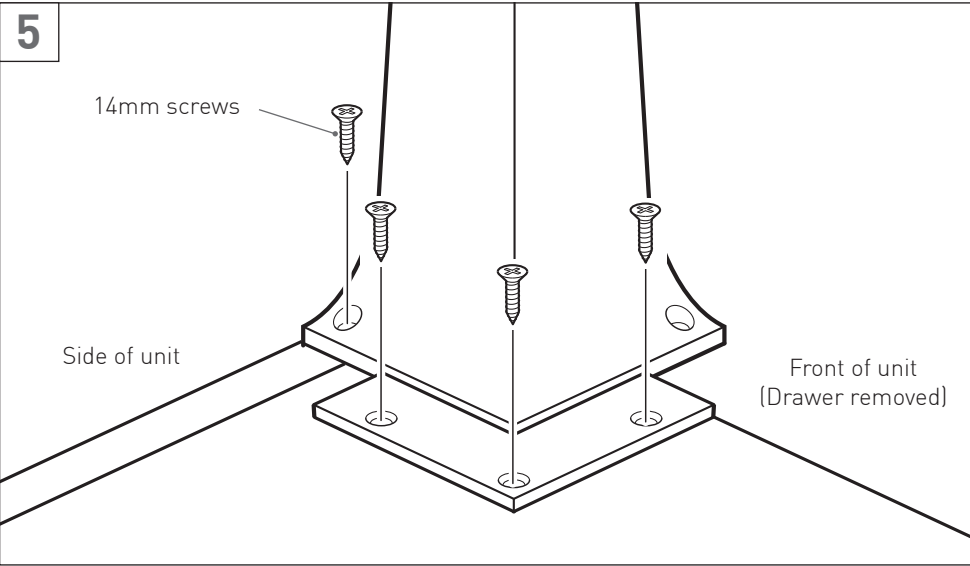


Line up the rear legs so they are flush with the sides and the back of the unit.

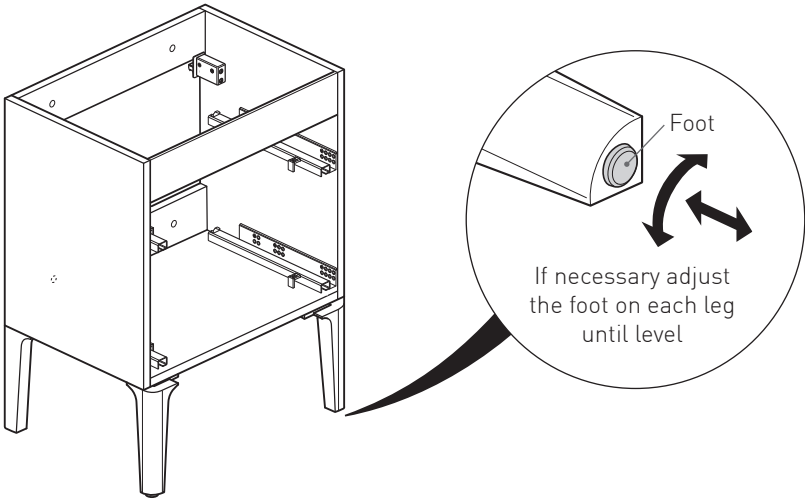


Attach the leg to the unit using the screws provided. The short 14mm screw is used at the front and the two longer 20 mm screws at the side. Repeat for the other leg.

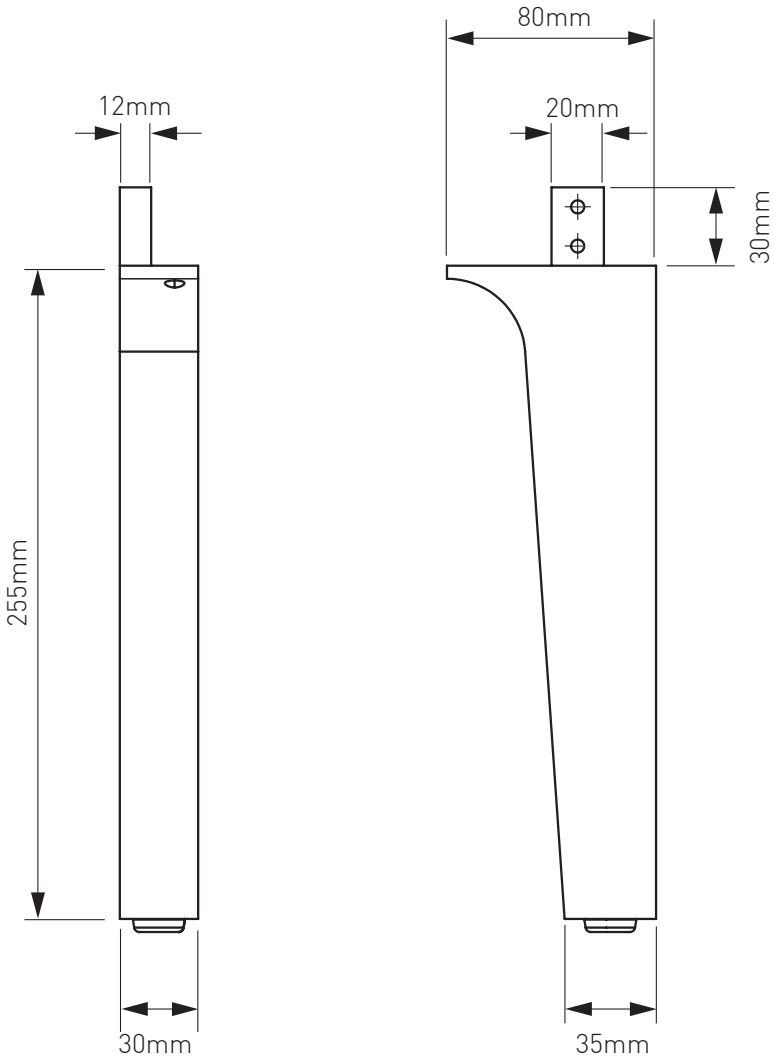
Installation - front legs



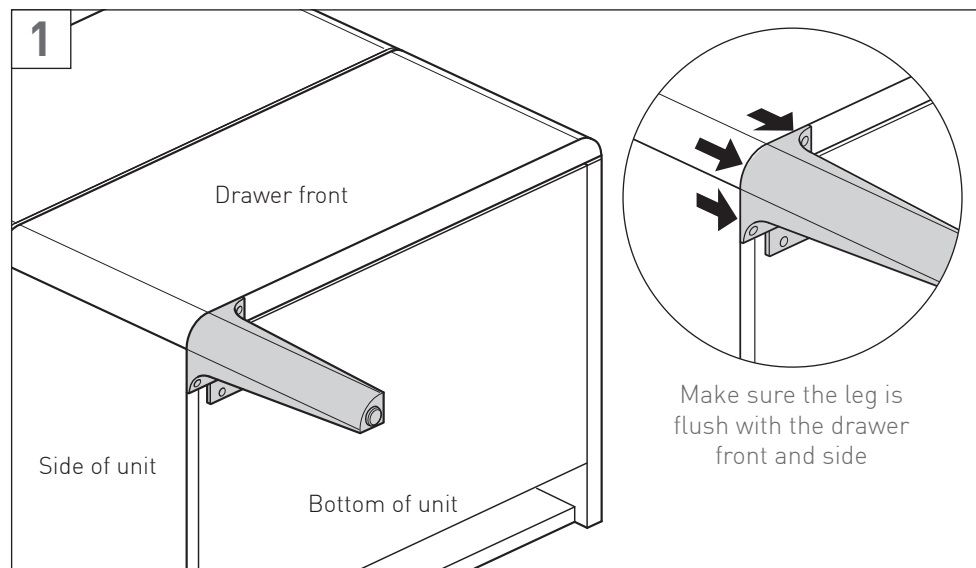
Line each bracket up to the marked points and screw in using four 14mm screws provided. Repeat for the other leg. Continue to page 9 if you are also installing the rear legs, otherwise proceed to the vanity installtion guide.



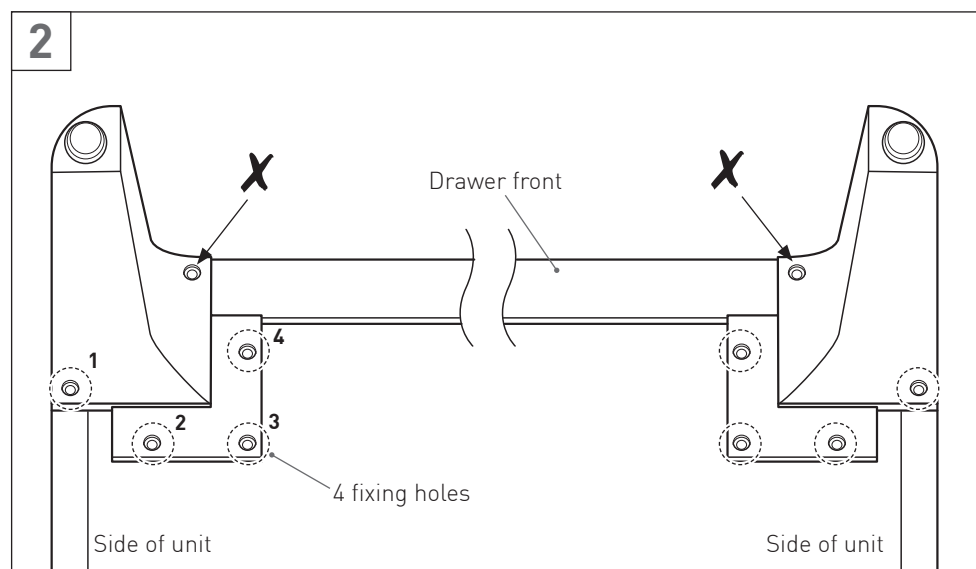
Dimensions - rear legs



Installation - front legs

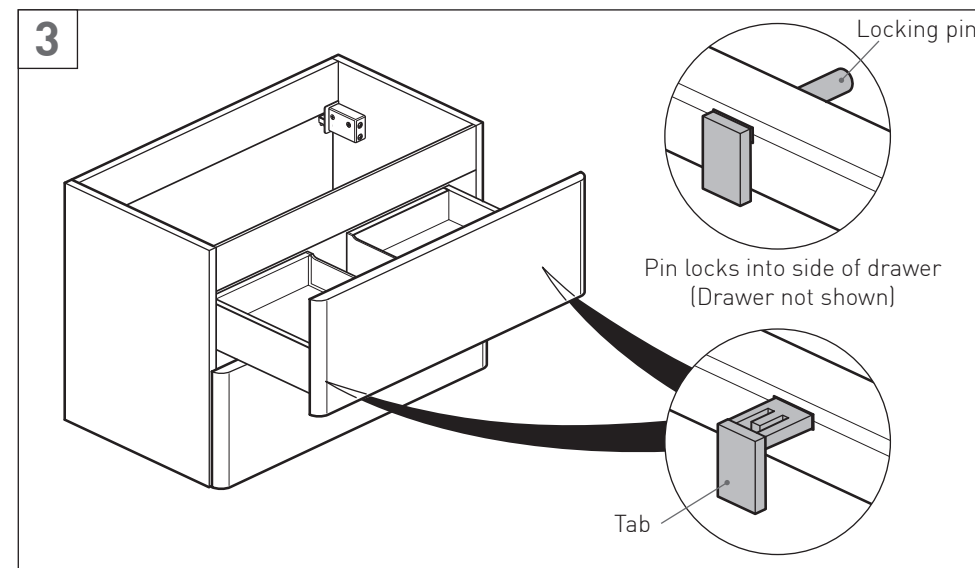


Carefully lay the Vanity unit on its back.
Line up the leg so it is flush with the drawer front and side of the Vanity unit.

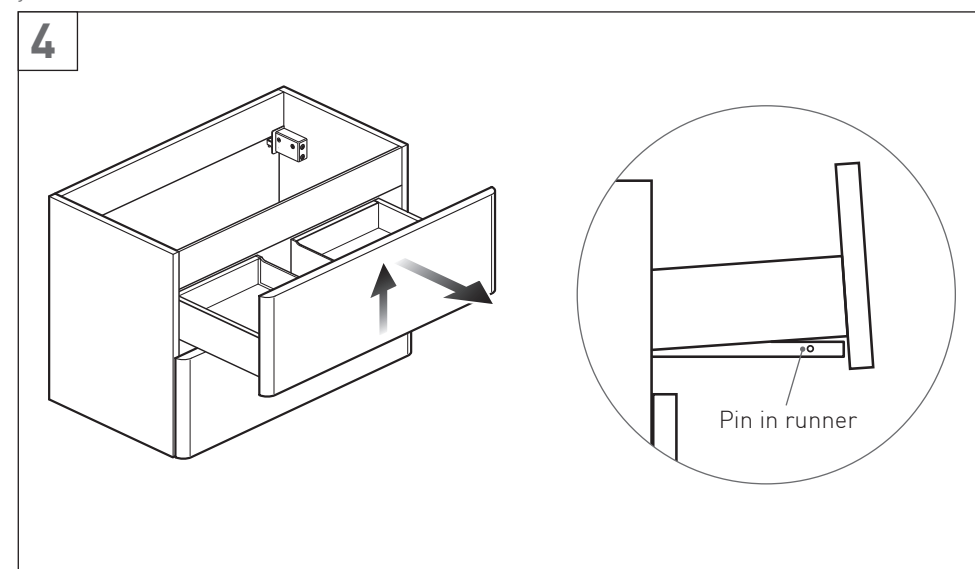


Mark the four fixing points on each side as shown.
NOTE: do not use the the fixing hole that covers the drawer front.

Installation



Remove the drawers prior to fitting the legs. Pull out a drawer so it's fully extended. On the underside of the runners, push each tab towards the centre of the unit until you hear a click.



Gently lift the drawer forward to disengage it from the runner and remove from the cabinet. Repeat for the other drawer.
NOTE: Cover the drawer runners to prevent debris from getting into the mechanism.