

astro

HOME LIGHTING

1

PURPOSE + BALANCE

John Fearon Co-Founder

“I’m not one for looking back, so it’s nice to be able to welcome you to our first Home lookbook as we move forward from the difficulties of last year.

In creative terms, it has been challenging to maintain the ability to spark off one another when we’re all working from home, but to balance that, we’ve been able to benefit from all sorts of other influences from our home environments. Certainly, my fellow Co-Founder James and I believe the designs that we have been working on in the last few months feel better than ever because of it.

After 24 years, our view of what makes a good design remains the same. We aim for an elegant simplicity, a timeless quality, and when we detail a product, we trust if the engineering is great, the end-product is likely to be great too.

Lighting has always been my passion – the way you can flick a switch and instantly bring a room to life. So, when asked why we created this lookbook, at the core was sharing our thoughts on what makes good lighting. Fundamentally, lighting has two purposes: task or ambient. But it’s only when you combine the two in a balanced way that you successfully set the correct atmosphere in a space.

With this in mind, I welcome you to our lookbook showcasing a curated selection of some of our latest designs and finishes. I hope it inspires you to find the right lighting solution for your own home.”



Co-Founders James Bassant
and John Fearon

“Most designs start life as a simple pencil sketch, drawing influences from the world around us. But our collections are not dictated by trends. They are rooted firmly in the now, with a timeless appeal that blends effortlessly with any space for years to come.”

X
two

James Bassant Co-Founder + Design Director



FORM MEETS FUNCTION


X
four

Thoughtfully designed and well-proportioned, explore contemporary task lighting that creates harmony between your space and your lifestyle.

When a lighting scheme is great you almost do not notice it; it works in rhythm with the overall space. Well-placed pendants, table, or floor lights can effectively illuminate essential daily tasks while contributing to your overall aesthetic.



GINESTRA PENDANT
Featuring dimming capabilities and a fully adjustable cable, the Ginestra Pendant delivers ambient bedside illumination that can be customised to achieve the desired mood.



CABARET
Intended for bathrooms or dressing rooms, Cabaret can be positioned both horizontally or vertically around a mirror to create efficient task lighting.

HASHIRA PENDANT

The Hashira's discreet profile and intriguing lighting effect make it particularly suited to hanging over kitchen islands or dining tables, when it can be used in a cluster or a row for heightened drama.





ORB

The Orb is an illuminated magnifying mirror unlike any other, providing useful task lighting with an appreciable sense of design. Use Orb on its own or pair with our Orb Single wall light for a cohesive lighting scheme.



ASCOLI FLOOR
A simple yet elegant floor lamp, Ascoli floor features an elongated stem and adjustable head, ideal for illuminating the task at hand or providing additional mood lighting.

ATELIER DESK

Bold in form and finish, our Atelier desk lamp was inspired by the engineering of a spitfire airplane. Functional yet beautiful, it's perfectly placed as both a desk light and bedside lamp.






ASCOLI DESK

A stylish alternative to the traditional table lamp, Ascoli's clean lines and simple silhouette bring a touch of elegance to any space.

ASCOLI SINGLE SWITCHED

Sleek and compact, Ascoli Single Switched features a fully rotational head that retains architectural appeal while supplying essential bedside illumination.





AMAS
Reminiscent of Art Deco designs with a softly curved, tiered shape, both the Amas and Amat cast a wash of light up, down, and outwards for multidimensional illumination.





TIMELESS ESSENTIALS

Effectively illuminate your home with understated yet purposeful interior lighting.

Light instantly breathes life into a space, it can unify a scheme and create atmosphere while encouraging a particular flow within a room. Slimline downlights, surface-mounted ceiling lights, or well-placed wall lights each supply expansive illumination, while quietly complementing your surrounding interiors.

PARMA

Sleek and subtle, Parma is a timeless wall light design with dimming capabilities. Cast from high-grade plaster, the versatile design can be painted to either complement or contrast surrounding interiors.



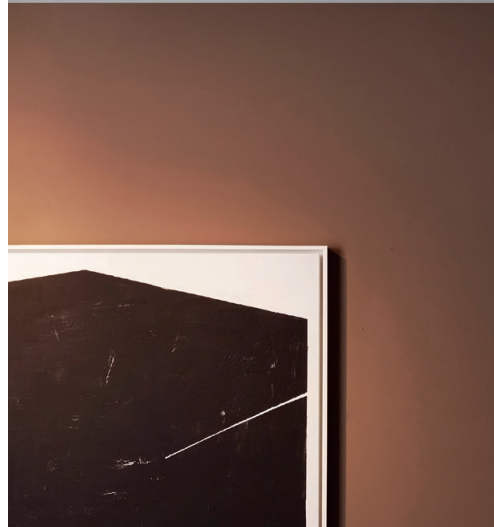
ASCOLI SINGLE

Exuding architectural elegance, smooth rounded edges and a sleek matt finish create a timeless, streamline appearance to this modern spotlight.



APOLLO BAR

A modest lighting solution, Apollo delivers visual comfort with advanced functionality and contemporary appeal.







OSCA
Suitable for bathrooms
and general living
spaces, this perfectly
proportioned surface
mounted downlight looks
particularly stylish when
used in a kitchen or open-
plan living environment.



ATELIER WALL

Neat yet robust, Atelier wall presents a modern take on the classic bedside lamp. Offering dimming capabilities, Atelier provides ample illumination for reading that book you can't put down.



HASHIRA 300

The Hashira is a contemporary wall light inspired by neoclassical architecture. It washes defined pools of light upwards and downwards, casting complex shadows that echo its shape.





MILO
Milo's restrained design allows it to blend in anywhere. Featuring a gloss glaze finish, use one to gently illuminate a dark corner, or cluster to form atmospheric pools of light that draw the eye.

io PENDANT

Handcrafted to the highest quality, io pendant's components are discreetly hidden to make the fluted glass the true hero of the design.



ROMA

A timeless classic. Roma is an elegant bathroom wall light that's been refreshed in a stylish matt black finish. Complete with an opal glass shade, Roma looks best when placed on either side of a mirror.



ELEVATED BY ARTISTRY

Bold in shape, stature, or finish, explore lighting that brings a statement to everyday living.

Whether chosen to embellish or add drama, even the more daring of designs when executed with purpose will look just right. They should be bold enough to catch your attention but retain a subtlety that doesn't detract from the rest of your space.



Tacoma Single (Twin also available)

TACOMA
Taking influence from gothic-style architecture, Tacoma marries ribbed glass globes and a statuesque metal stem to deliver a dramatic wash of light.



Tacoma Single Grande



BLEND

A new classic. Exquisitely moulded from high-grade plaster, Blend's precise scallop detailing creates a unique shadow which is enhanced by the pure white nature of the plaster material.

VERSAILLES

Inspired by classic 1930s interiors, Versailles is a streamlined design that exudes vintage glamour, featuring individual glass rods and stylish metal ends caps.





SAGARA
A captivating wall light
in contemporary matt
black, Sagara features a
spherical glass shade that
appears to levitate above
its structured metal base.

THE GREAT OUTDOORS

✕
twenty six

Balconies, terraces, gardens, or pathways. Awaken your outdoor space with ambient and diverse exterior lighting.

A captivating interplay of material and light, our outdoor lighting collection presents a choice of versatile designs and finishes including concrete, brass, and matt black. Each work effortlessly into surrounding environments but can be harnessed to create interest within a well-considered scheme.

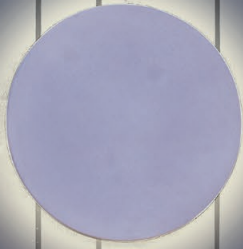


MONTPARNASSE WALL
Finished in bronze or polished nickel, our Montparnasse wall light is a timeless addition to any outdoor living space and looks particularly charming when used with a vintage-style filament lamp.



NEWBURY

Suited to a variety of exterior settings, Newbury features a rectangular box frame in black with three clear glass panels to stylishly expose the bulb within.



ECLIPSE

Reminiscent of a modernist abstract sculpture, the Eclipse wall light in concrete appears to float above the surface, transforming it into a striking feature whether lit or unlit.



CABIN WALL

With a nod to industrial and nautical design, Cabin looks effective when used on its own or in multiples along an exterior wall. A frosted version is also available for softer illumination.



KURO

An invaluable addition to any outdoor space, this contemporary solar powered lantern blends effortlessly with any decorating style and can be used both outdoors and indoors thanks to a USB charging source.

MAST LIGHT

An attractive and versatile outdoor lighting solution, Mast elegantly illuminates walls, pathways, terraces and fencing and can be dimmed for optimum light output.





MYOS
Simple and modern with an architectural feel, the Myos outdoor spotlight offers versatile accent lighting. Use it to illuminate plants, pathways, and important zones in the garden.



HARVARD LANTERN

A modern interpretation of the traditional lantern, Harvard is a crisp, slimline box shape that brings an elegant symmetry to any exterior.

Featured Products

Tacoma Single P.22

3W Max LED G9 Lamp sold separately
 H 352 x W 135 x D 173mm
 3 Shade options sold separately



Tacoma Single Grande P.22

3W Max LED G9 Lamp sold separately
 H 532 x W 135 x D 173mm
 3 Shade options sold separately



Orb P.7

3W Max LED G9 Lamp sold separately
 H 434 x W 210 x D 92mm



Versailles 400 P.24

Integral 7.1W LED
 H 400 x W 125 x D 89mm 4 sizes available



Harvard P.3

4W Max LED E27/ES Lamp sold separately
 H 350 x W 80 x D 80mm



Hashira 300 P.18

2 x 6W Max LED GU10 Lamp sold separately
 H 300 x W 82 x D 85mm 2 sizes available



Roma P.21

3W Max LED G9 Lamp sold separately
 H 190 x W 150 x D 153mm



Sagara P.25

3W Max LED G9 Lamp sold separately
 H 155 x W 120 x D 150mm



Cabaret P.5

4/5 x 3W Max LED G9 Lamps sold separately



5 II H 65 x W 700 x D 90mm



4 II H 65 x W 550 x D 90mm



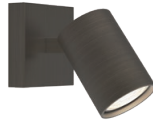
Ascoli Single Switched P.11

6W Max LED GU10 Lamp sold separately
H 103 x W 90 x D 130mm



Ascoli Single P.14

6W Max LED GU10 Lamp sold separately
H 130 x W 80 x D 80mm



Atelier Wall P.17

12W Max LED E27/ES Lamp sold separately
H 185 x W 122 x D 245mm



Milo P.19

12W Max LED E27/ES Lamp sold separately
H 130 x W 310 x D 95mm
Ceramic



Blend P.23

12W Max LED E27/ES Lamp sold separately
H 135 x W 320 x D 110mm
Plaster



Amat 320 P.13

12W Max LED E27/ES Lamp sold separately
H 125 x W 320 x D 110mm
Ceramic



Amas 320 P.12

12W Max LED E27/ES Lamp sold separately
H 125 x W 320 x D 110mm
Ceramic



Parma 160 P.14

Integral 6.4W LED
H 160 x W 70 x D 100mm 7 sizes available
Plaster



Ginestra 300 P.4

12W Max LED E27/ES Lamp sold separately
H 200 x Ø 300mm 3 sizes available



Hashira Pendant P.6

6W Max LED GU10 Lamp sold separately
H 2922 max x Ø 200mm



Osca Round 140 P.16

6W Max LED GU10 Lamp sold separately
H 140 x Ø 110mm 3 sizes available
Plaster



Apollo Four Bar P.14

4 x 6W Max LED GU10 Lamps sold separately
H 219 x W 900 x D 60mm 5 sizes available



io Pendant 1000 P.20

Integral 20.2W LED
H 2113 x W 1000 x D 80mm



Atelier Desk P.9

12W Max LED E27/ES Lamp sold separately
H 532 x W 122 x D 200



Ascoli Desk P.10

6W Max LED GU10 Lamp sold separately
H 420 x W 135 x D 210mm



Ascoli Floor P.8

6W Max LED GU10 Lamp sold separately
H 1225 x W 200 x D 285mm



Newbury P.27

12W Max LED E27/ES Lamp sold separately
H 316 x W 160 x D 112mm



Harvard Lantern P.31

12W Max LED E27/ES Lamp sold separately
H 425 x W 110 x D 161mm



Montparnasse Wall P.26

12W Max LED E27/ES Lamp sold separately
H 330 x W 205 x D 240mm



Cabin Wall P.29

12W Max LED E27/ES Lamp sold separately
H 220 x W 116 x D 183mm



Mast Light P.29

6W Max LED GU10 Lamp sold separately
H 135 x W 85 x D 85mm



Eclipse P.28

Integral 12.6W LED
Ø 300 x D 44mm



Myos P.30

Integral 8W LED
H 150 x W 40 x D 100mm
Extension pole sold separately



Kuro 450 P.29

Integral 1.3W LED solar or USB charged
H 500 x W 145 x D 145mm



Kuro 250 P.29

Integral 1.3W LED solar or USB charged
H 300 x W 145 x D 145mm



Styling

Laura Fulmine
Hannah Franklin

Photography

Beth Evans

With thanks

M.A.H Gallery
Au Bespoke
Christopher Farr
Galvin Brothers
LinenMe
Secret Linen Store
The Poured Project

Paper

Inside
FSC® fibres FSC-C020637
PEFC™ PEFC/05-33-99
EU Ecolabel certified

Cover
55% FSC® fibres FSC-C015523
40% recycled fibres FSC-DIR-40-004 EN
5% cotton fibres

Explore the full Astro Home collection at
www.astrolighting.com

Follow @astrolightinghome



